



ROGAINE

WARA Spring 24hr & 6hr Schools Championships, 9-10 August 2014

SCALE 1:50,000, 5 metre contour interval
0 1km 2km 3km

Setters
Ricky Thackray
Natasha Sparg

Vetters
Phil Dufty
Keith Dufty
Mark Imbert
Tim Sikma



Department of Sport and Recreation



wa.rogaie.asn.au



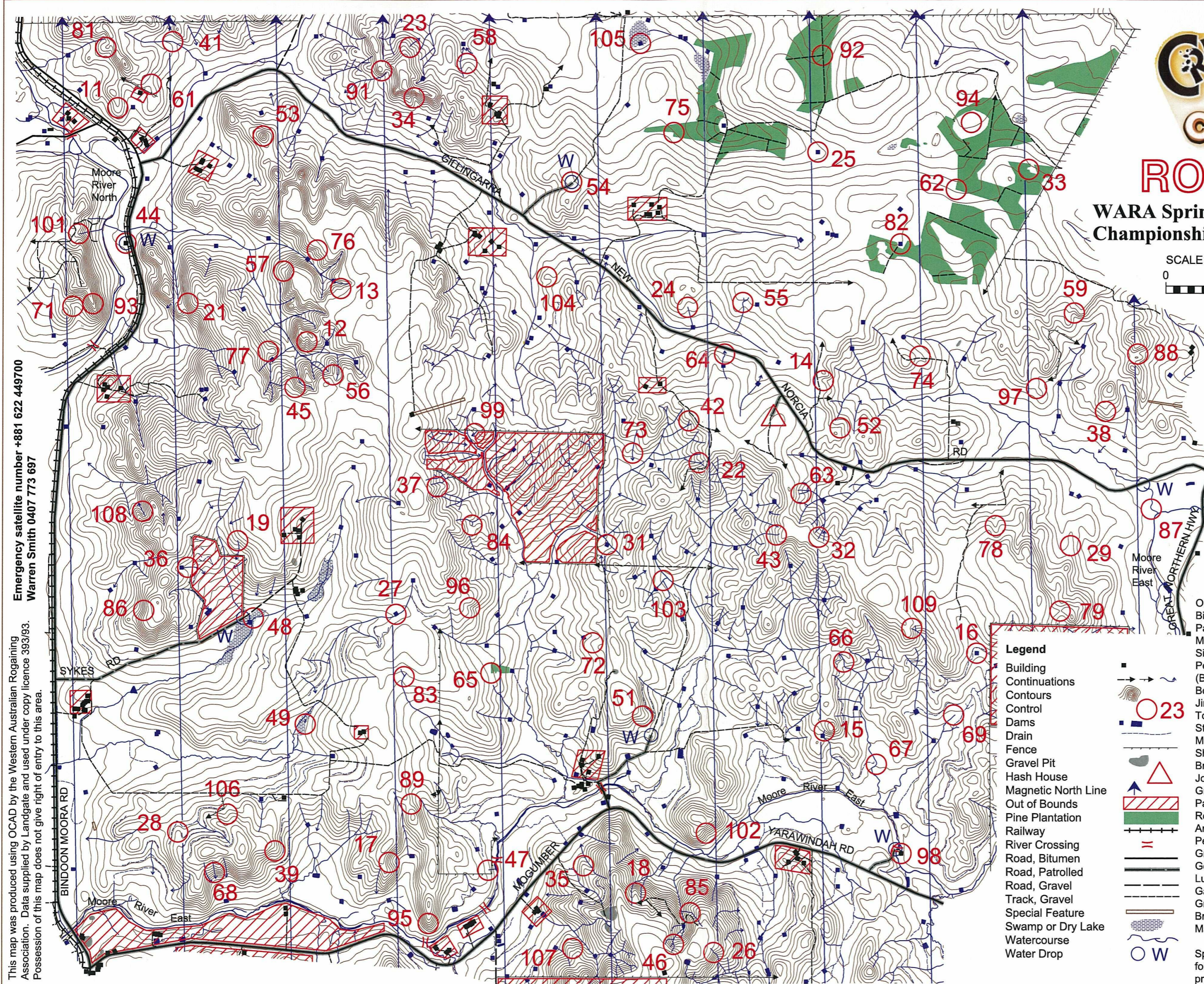
Our thanks to the farmers:

- Bill & Roslyn Cocking "Wourie Pool"
- Paul Drennen "Wytwools"
- Monty Driessen
- Simon & Clare Forrester
- Peter Grainger & Abbot John (Benedictine Community)
- Bob Harridge "Cooinda Park"
- Jim & Janine Kelly
- Tom & Kay Kelly
- Stuart & Andrea Kelly
- Mark Kelly
- Shane & Emma Kelly "Jewel Park"
- Brian & Pam Kelly
- Jo & Natham Lidgit
- Greg & Virginia Linke "Glen Moore"
- Paul & Robyn Linke "Merrie Lea"
- Rob & Tania Menzies "Kootara"
- Ann Nixon "Dalmeny Downs"
- Peter & Sally Nixon
- Graeme & Sandy Nixon "Border Reivers"
- Geoff Poklepovich "Kardinya"
- Luke & Maureen Poklepovich
- Gavin Shalders
- Grant & Sharon Sinclair "Monte Casino"
- Brad & Lisa Sinclair "Moon River"
- Marty & Karen van Beek

Special thanks to Rob & Tania Menzies for their generosity and use of their property for the Hash House site.

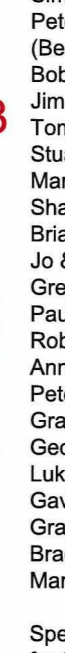
Emergency satellite number +881 622 449700
Warren Smith 0407 773 697

This map was produced using OCAD by the Western Australian Rogaining Association. Data supplied by Landgate and used under copy licence 393/93. Possession of this map does not give right of entry to this area.



Legend

- Building
- Continuations
- Contours
- Control
- Dams
- Drain
- Fence
- Gravel Pit
- Hash House
- Magnetic North Line
- Out of Bounds
- Pine Plantation
- Railway
- River Crossing
- Road, Bitumen
- Road, Patrolled
- Road, Gravel
- Track, Gravel
- Special Feature
- Swamp or Dry Lake
- Watercourse
- Water Drop



Crunchy Nut Clusters - WARA 24 Hour Rogaine 9-10 August 2014

No.	Description	Points	No.	Description	Points	Important Information
10	Corn Flakes (0.2%)	10	60	Froot Loops (1.5%)	60	
11	The spur	10	61	A saddle, E side - next to a bomb	60	
12	The gully	10	62	The plantation corner, 60m @ 80°	60	Control Cards
13	The gully	10	63	The southern watercourse, a junction	60	From 11:30 Saturday
14	The gully	10	64	The watercourse	60	
15	The watercourse, head of	10	65	The plantation corner, 50m @ 50°	60	Briefing
16	The dam, 35m @ 350°	10	66	The almost watercourse	60	11:45 Saturday
17	The gully - on a broken tree	10	67	The watercourse bend	60	
18	The spur, rocky - next to a rock cluster	10	68	The watercourse	60	Start
19	The watercourse, head of	10	69	A 25m x 5m crescent lake, S side	60	12:00 Saturday
20	Coco Pops (0.4%)	20	70	Just Right (1.6%)	70	
21	A 6m granite cliff, S end	20	71	The western gully, broad - in a tree cluster	70	Finish
22	The watercourse junction	20	72	The spur - next to a pile of rubble	70	12:00 Sunday
23	The watercourse, head of	20	73	The watercourse	70	
24	The watercourse, head of	20	74	The spur - on a sick tree	70	
25	The dam, NE corner - on a windmill	20	75	The plantation, N corner	70	Hash House
26	The watercourse	20	76	The gully, head of	70	Opens at 17:00 Sat
27	The dam, 20m @ 240°	20	77	A saddle	70	Closes by 13:00 Sun
28	The spur, NE of tanks	20	78	The gully	70	
29	The spur, rocky, a saddle	20	79	The saddle (eastern)	70	Sunset
30	Rice Bubbles (0.4%)	30	80	Sultana Bran (1.7%)	80	17:46 Sat
31	The dam, NW corner	30	81	The spur	80	
32	The middle watercourse	30	82	The dam, SE corner - on a windmill	80	Sunrise
33	A lonely pine tree	30	83	The watercourse junction	80	06:55 Sun
34	The gully, a watercourse junction	30	84	The southern watercourse, head of	80	
35	The spur	30	85	The watercourse	80	Moonrise
36	The watercourse	30	86	The gully	80	16:16 Sat
37	The spur, rocky	30	87	The watercourse, southern bend (WATER near road)	80	
38	The spur	30	88	The gully	80	Moonset
39	The spur	30	89	The eastern gully, head of	80	06:01 Sun
40	Nutri Grain (0.6%)	40	90	Sustain (2.8%)	90	
41	The watercourse, a junction	40	91	A saddle - S end of mapped knoll, on a post	90	Water Drops; Controls
42	The northern watercourse	40	92	The track junction, 50m @ 220°	90	44, 48, 51, 54, 87, 98
43	The watercourse	40	93	The ridge - above a 15m rock wall to the east - Tash's Terrific View	90	
44	The ruin - 'out back' (WATER 'out front')	40	94	A tree cluster - E of another tree cluster	90	Patrolled Roads.
45	The gully, head of	40	95	The spur, rocky	90	All bitumen roads
46	The southeastern watercourse	40	96	The gully, rocky	90	
47	The watercourse, head of	40	97	A saddle	90	
48	The watercourse (WATER on road) - tRicky's electric experience	40	98	The shed, N side (WATER on track bend, W of ford)	90	Late Penalty
49	A windmill	40	99	The eastern watercourse	90	10 points per minute or part minute.
50	Special K (0.7%)	50	100	Crunchy Nut Clusters (7.3%)	100	
51	The spur, rocky, a knoll (WATER on spur on track)	50	101	The watercourse, head of - 10m W of 2m rock formation	100	
52	The spur, rocky, a knoll	50	102	The gully - Keith's Crossing (river)	100	LATE (no points) later than 12:30 Sunday
53	The knoll - salute a fallen flagpole	50	103	The SW watercourse junction	100	
54	A saddle, broad - N of track (WATER)	50	104	A knoll, rocky	100	
55	The watercourse bend	50	105	The dam, S side - S end of an abandoned lake	100	Controls Used
56	The saddle	50	106	A pair of 4m high granite spines, S end - Phil's Stegosaurus	100	90
57	The spur, a knoll	50	107	The gully	100	
58	The spur - next to a pile of rocks	50	108	The watercourse	100	Total Points (controls)
59	The gully	50	109	The western watercourse, head of	100	4950

If you are injured make your way to a water drop or a patrolled road and wait there for help

CRUNCHY NUT CLUSTERS

The Cereal Game

Welcome to the Crunchy Nut Clusters Rogaine. In addition to your standard, fun event, there are also bonus points available for finding cereal boxes out on the course! How it works:

Hidden on the course will be bunches of cereal boxes. We cannot tell you where these are in advance but there are clues available. When you find a control, check the intention sheet and if you see writing at the bottom, you're in luck! The clues will be cryptic in nature but if you can solve the puzzle, it may lead you to the prize. The rules:

- Cereal boxes will be worth between 10 – 100 points. Check your control description sheet. Since we're all such a healthy bunch, the higher the fat content of the cereal, the more points available. The number on the description sheet is the fat content.
- All boxes will be within the circle at the designated control so no overly long treks off your plan to find them. The clues will hint at the object or feature at which you can expect to find them – use your eyes and your map!
- The clue will also indicate the number of boxes located at that control so you can decide if it's worth your while looking if more teams have come through than boxes available. Remember, they may not have all been found!
- There is no order to where the higher points are located. It is at the setter's discretion 😊
- There is a limit of ONE box per team of ANY variety. This is meant to be fun so no hogging boxes. Since they are in 'clusters', please take one and leave the rest.
- If you should be lucky enough to find a higher value box than one you are holding, feel free to exchange it but make sure you leave the lower value box where you pick up the new box. If you come back to the Hash House, hand in your box and later return to the course, please do not pick up any more boxes. Feel free to hold onto the one you have until you have finished.
- Cereals are yours to keep as a reward (and for a healthy snack). All boxes are numbered so you cannot hand it over to your friends for extra points.

Have fun and enjoy the event!